



1-1: Take out these parts as showed in the photo.



1-2: Prepare four long bolts well.



1-3: Using the bolts to connect the leg to the beam.



1-4: Using the bolts to connect the leg to the beam.



1-5: Using the bolts to connect the leg to the beam.



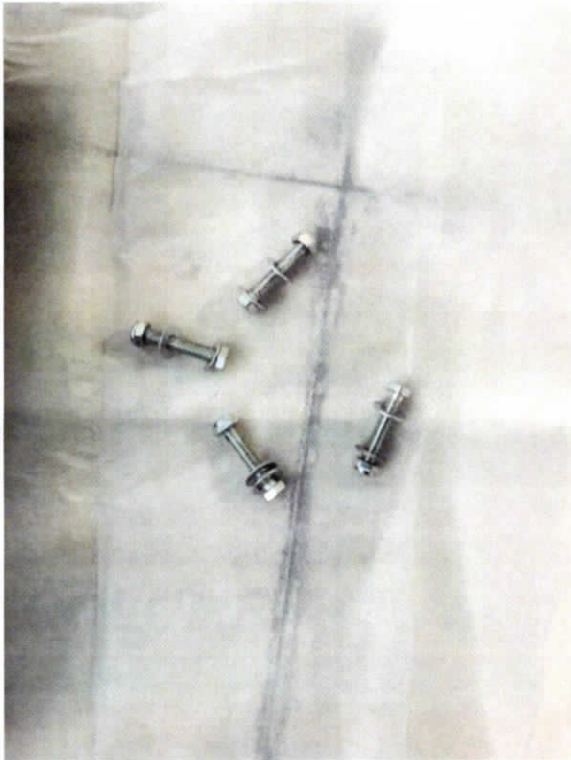
2-1: Prepare these parts as shown in the photo.



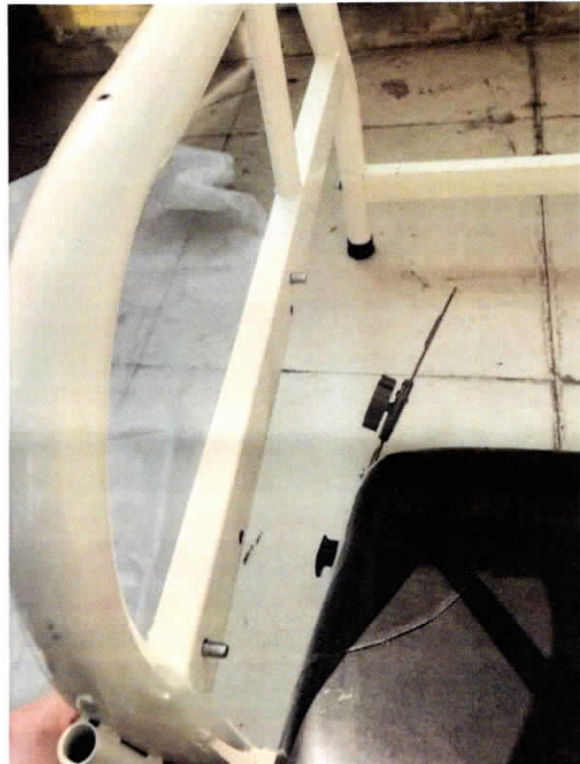
2-2: Connect the "L" shape to the seat.



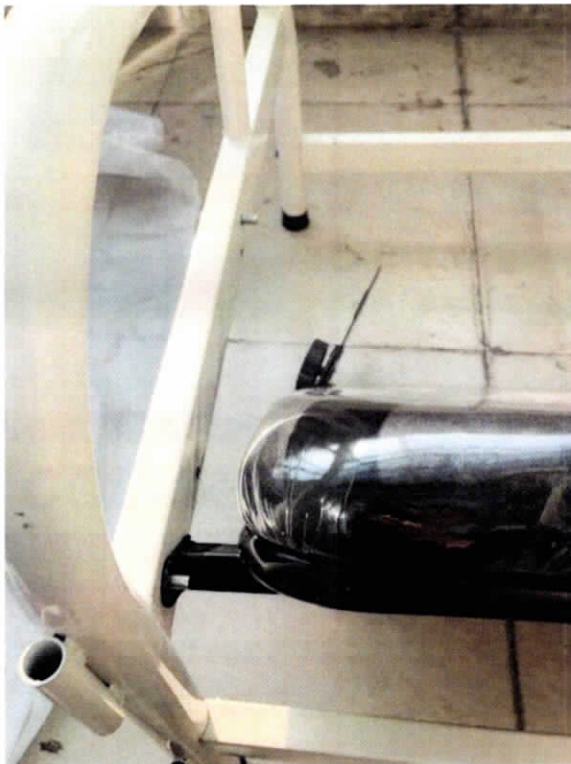
2-3: Connect the "L" shape to the seat.



3-1: Prepare these four bolts & nuts well.



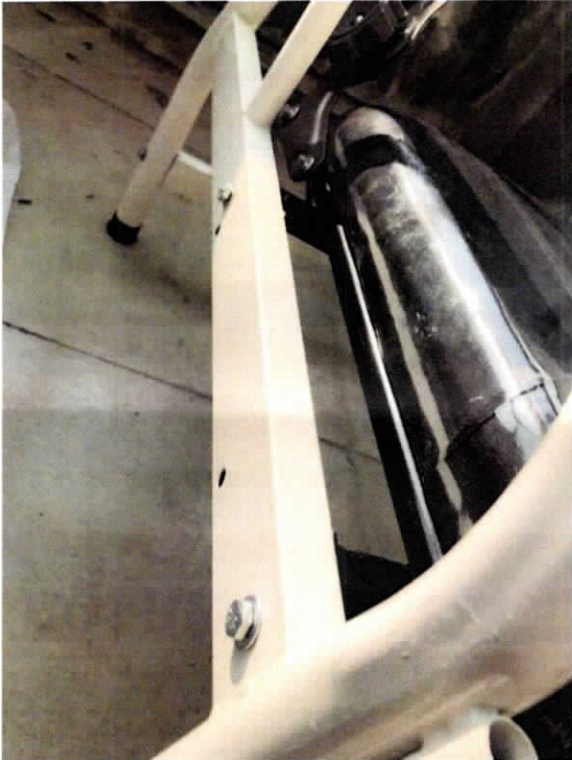
3-2: Fix the seat to the legs with the bolts & nuts.



3-3: Fix the seat to the legs with the bolts & nuts.



3-4: Fix the seat to the legs with the bolts & nuts.



3-5: Fix the seat to the legs with the bolts & nuts.



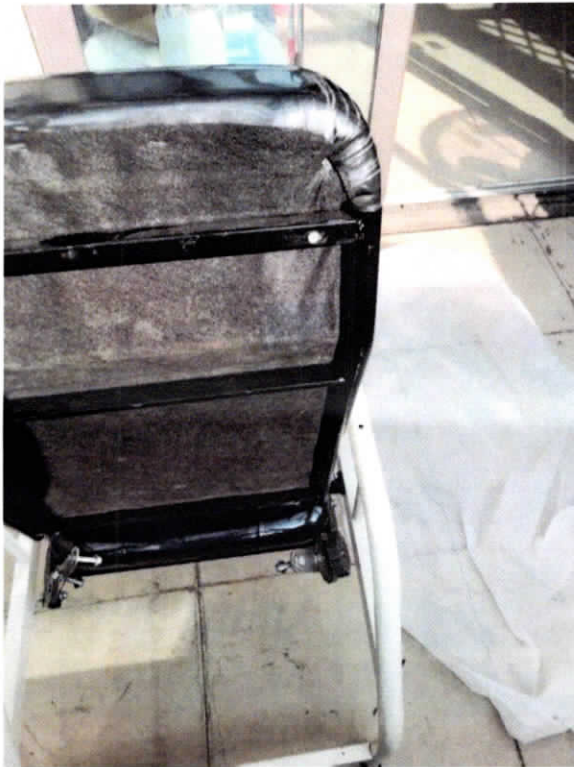
3-6: this is how the chair looks like after step #3.



4-1: Put the bolts onto the "L" shape.



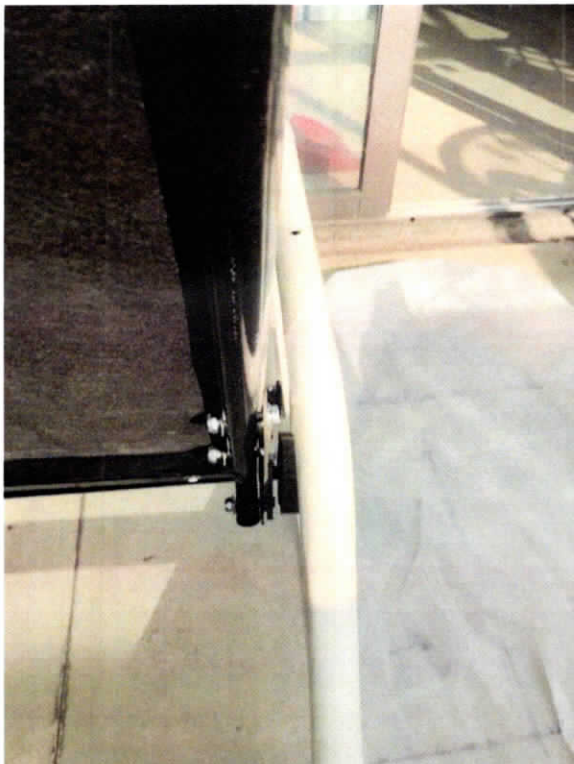
4-2: now it's time to set up the backrest.



4-3: Connect the backrest to the "L" shape with bolts & nuts.



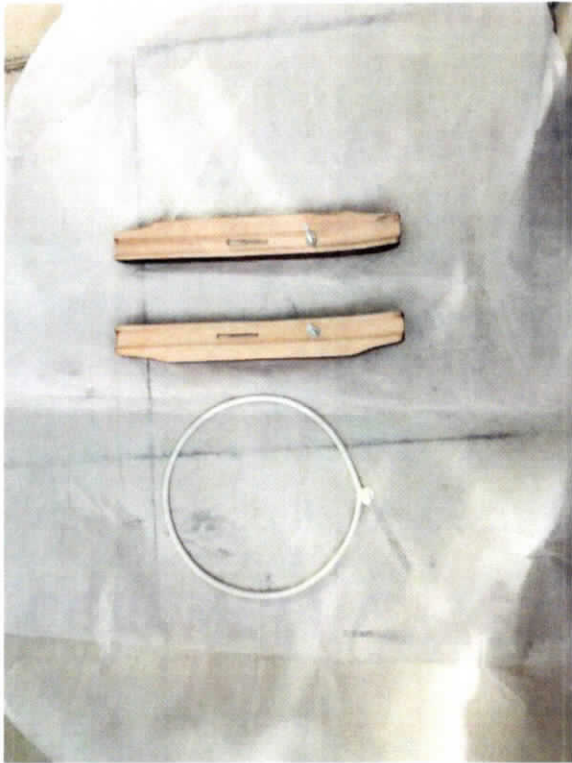
4-4: Connect the backrest to the "L" shape with bolts & nuts.



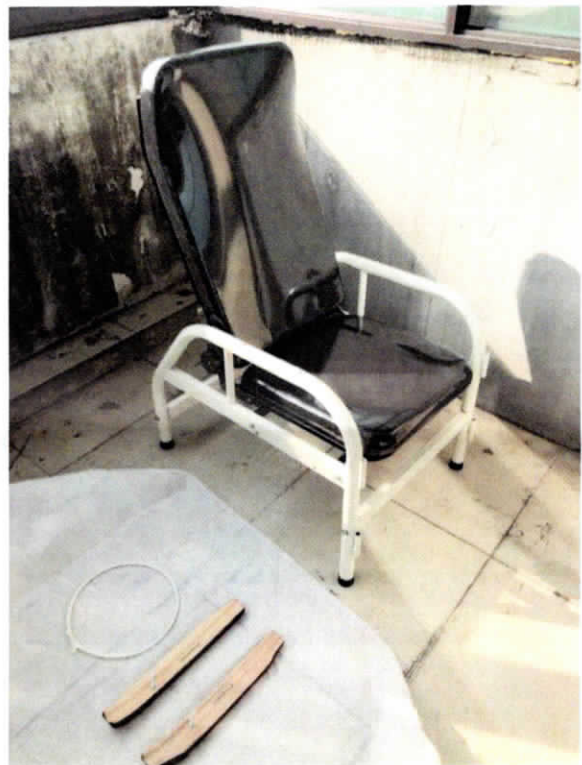
4-5: Connect the backrest to the "L" shape with bolts & nuts.



4-6: Connect the backrest to the "L" shape with bolts & nuts.



5-1: Now only left the hand rest and ring behind.



5-2: Time to do the last step.



5-3: Fix the hand-rest with two bolts.



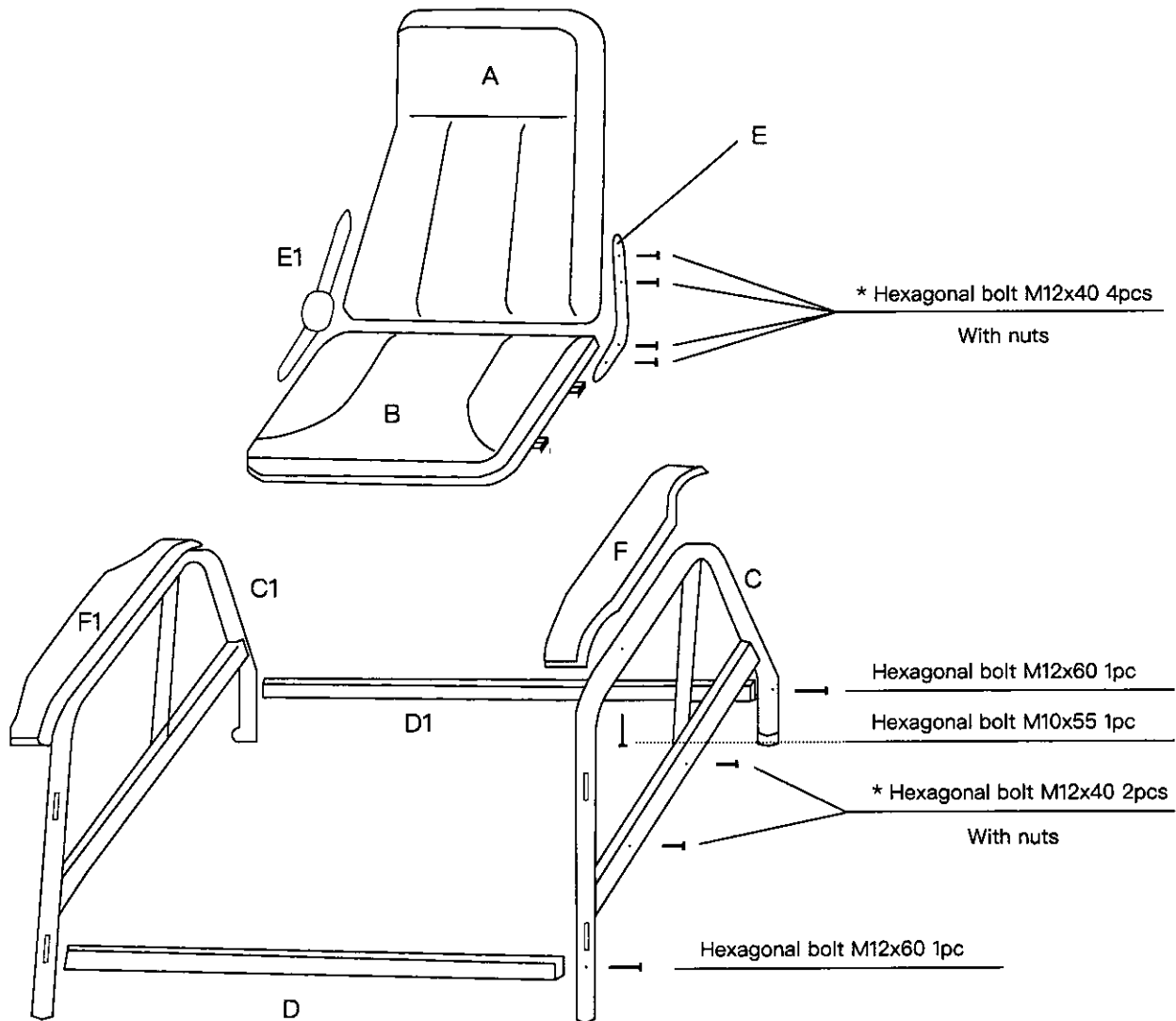
5-3: Fix the hand-rest with two bolts.



5-4: Put on the ring to the place where you need it to be, now you've completed it, congratulations! Just remember to tighten all the bolts and nuts, that's all.

L-12515 Treatment Chair

Assembly Instruction



Assembly Order:

1. Connect A backrest to B seat, with E/E1 connector.
2. Connect C/C1 sides with D/D1 horizontal braces(leave loose).
3. Connect backrest & seat to the sides.
4. Tighten C/C1 and D/D1 bolts.
5. Connect F/F1 armrests to the C/C1 sides.